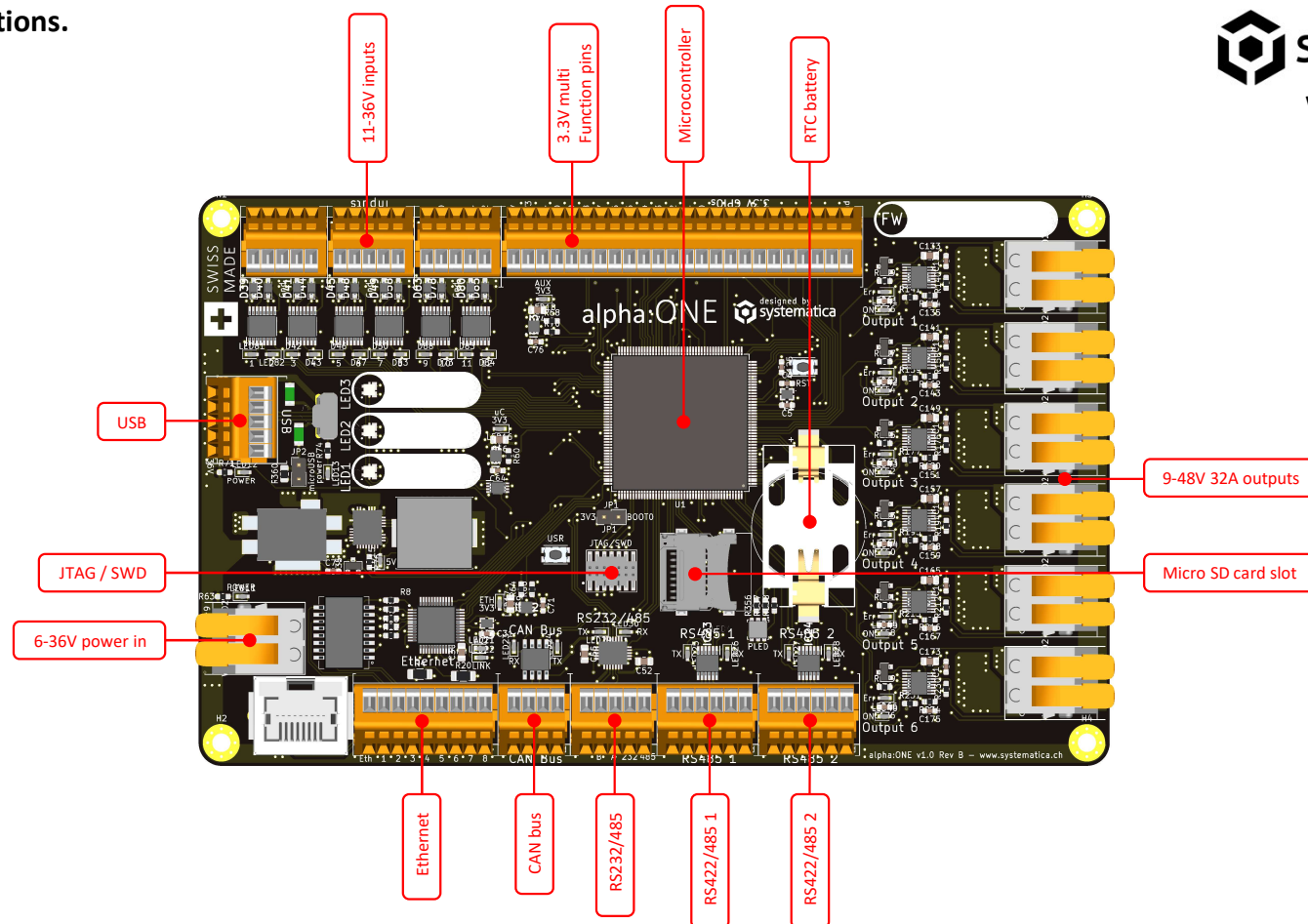


Be smart.  
Get it done quickly with high quality hardware.  
For industrial real time applications.

- STM32F722IEK 32Bit microcontroller
- 216MHz Cortex M7 CPU
- 512KB internal flash ROM
- 256KB internal RAM
- 8MB external QSPI flash
- Additional 8MB external flash
- 6-36V power in
- 3x LED RGB
- 12x 11-36V inputs
- 6x 9-48V 32A outputs
- 21x 3.3V multifunction pins (IO/PWM/ADC/DAC/UART/SPI/I2C)
- Micro SD card slot
- Real time clock with battery
- JTAG connector
- Micro USB connector (5V power in)
- Ethernet
- CAN Bus
- RS232/485
- 2x RS422/485
- Size: Eurocard 160x100x23mm
- Weight: 150g(TBC)



MicroPython

Also programmable with MicroPython  
www.micropython.org